

REMOTE MONITORING SOLUTIONS



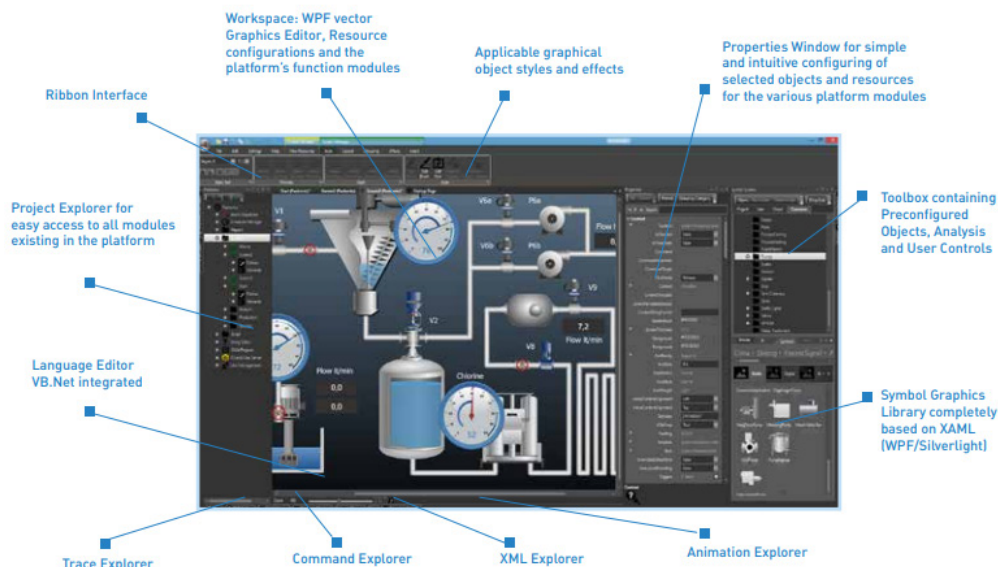
Simplify your remote monitoring with RMS200 – the powerful IIoT edge device from TAG Solutions



IIoT Edge Protocol Conversion **RMS200E & RMS200C**

Hear and Understand the Voice of Your Equipment to Achieve Maximum ROI and Drive Business Success with RMS200

Introducing RMS200, the next-generation IIoT edge device that simplifies your remote monitoring solution. Emerson's Movicon. NEX™ uses the most innovative technologies that meet the market demands for communication and interoperability that are essential across the IoT and Industry 4.0 domains. With powerful analytics and visualization capabilities, RMS200 helps you make data-driven decisions to optimize efficiency, reduce downtime, and improve performance. By integrating with FacilityConneX, our cloud-based real-time monitoring solution, RMS200 proactively optimizes energy efficiency, operational performance, and preventative maintenance with advanced predictive analytics.



FAST ENGINEERING

Faster development times aided by powerful wizards, extensive driver list and toolboxes.

SCALABILITY

Designed to ensure maximum scalability and allows you to use a single configuration environment for modular solutions in a simple and flexible way.

MAXIMUM SECURITY

Layered Security and Authentication methods to ensure managing data between Server and Client and highest level of threat protection.

RMS200E & RMS200C Features

| FEATURE | DESCRIPTION | |
|--|---|--|
| | RMS200E | RMS200C |
| DIMENSIONS (WxHxD) | 102.5 x 129 x 38 mm / 4.04 x 5.08 x 1.50 in | |
| ETHERNET PORTS | 2 GbE LAN | |
| SERIAL PORTS | 1 RS232/422/485 Selectable (1 Total) | |
| USB | 1 3.2 Gen 1, 2 2.0 and 1 USB-C | |
| ONBOARD MEMORY | 8GB memory with 64GB SATA SSD | |
| CELLULAR | No Connectivity | 4G (NOT 5G) LTE Connectivity AMIT 4G LTE Modem for FR01 (no SIM) - US ONLY |
| SUPPORTED CLOUD CONNECTIVITY | FacilityConnex, Amazon, Azure, Google | |
| INSTALLED SOFTWARE | Movicon Connex and FCX Edge | |
| MAX SUPPORTED TAGS | 4,000 (default) | |
| SUPPORTED DEVICE CONNECTIONS | Six Simultaneous Drivers are Supported | |
| DRIVER | Allen-Bradley Rockwell - Ethernet/IP • GE Ethernet • Modbus Serial RTU and Modbus TCP-IP • Omron - Ethernet/IP and FINS Ethernet • OPC UA Client • Siemens PC Adapter-MPI, PPI, and S7 TCP • SQL Driver • IoT ProgeaCloud Databoom • MQTT Client • ROC • BACnet/IP • Konnex - KNX Eibus • SNMP Manager • Fatek • Mitsubishi - Melsec FX, Melsec FX TCP, Melsec Q TCP • MTConnect • Panasonic FP MEWTOCOL • Saia DATA Mode | |
| INPUT VOLTAGE | 8~24 VDC ; 3pin Terminal Block | |
| OPERATING TEMPERATURE & HUMIDITY RANGE | -20 ~ 60C ; 10% -95% (non-condensing) | |
| CASE TYPE & MATERIAL | Compact Fanless Aluminum and Plastic | |
| REGULATORY INFORMATION | ETL Listed • EN 62368-1 • IEC 62368-1 IEC • IEC 60945 • IEC/EN 61010-1 • IEC/EN 61010-2-201 • CE • UKCA • REACH • RoHS 3 (2015/863/EU) • CB scheme | |
| WARRANTY | 12 Month Limited Warranty | |



Visit Our Website
tagsolutions.io/remote-monitoring-solutions

